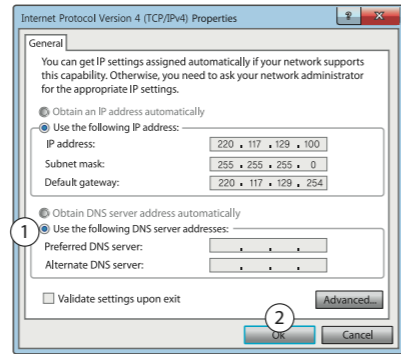
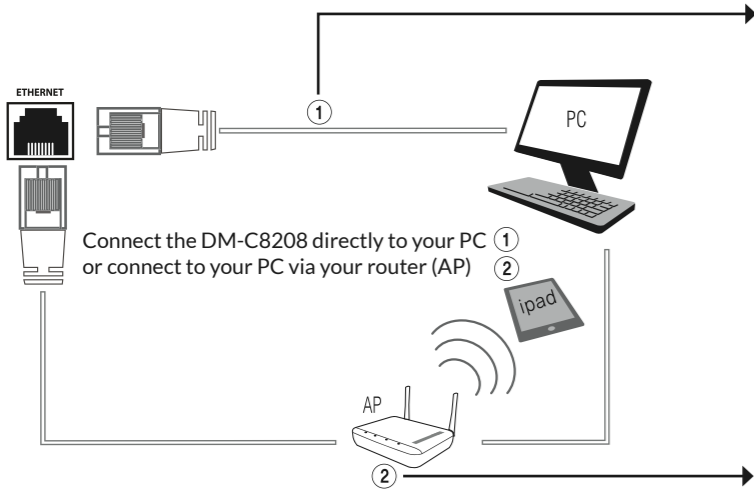


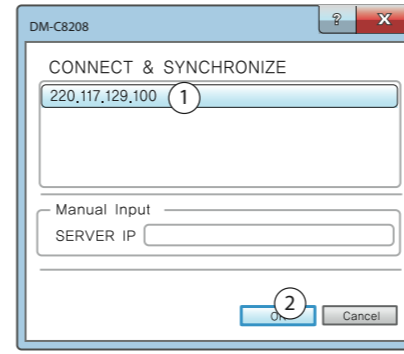
Download the latest DM-8208 Software to your computer from our website at www.fbt.it. IOS and Android software is also available. You can download the app from Apple's App Store and Google Play.



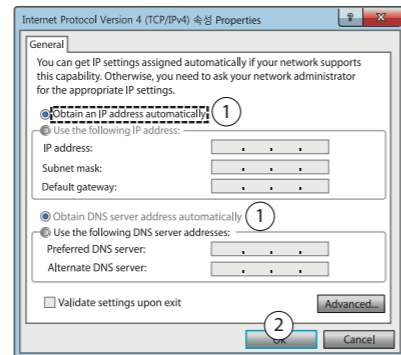
If you have connected directly to your PC, enter the following address.
1. when setting up the network
2. Press the OK button



Click on FBT software icon



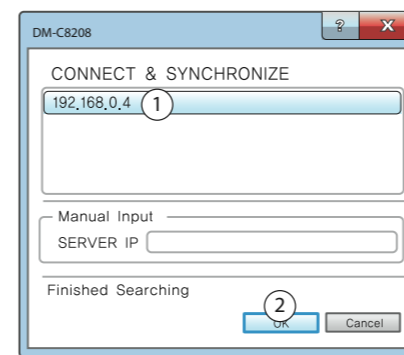
The IP address (1) is displayed. After selecting (2) press the OK button.



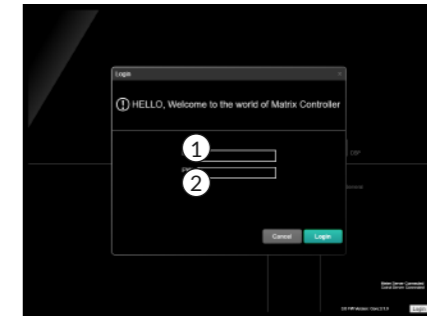
If you have connected to your PC via your router (AP), select an address.
1. Automatically when setting up the network
2. Press the OK button



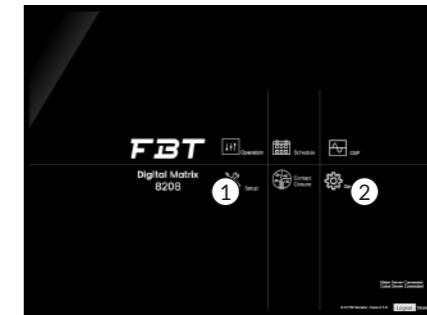
Click on FBT software icon



The IP address (1) is displayed. After selecting (2) press the OK button.

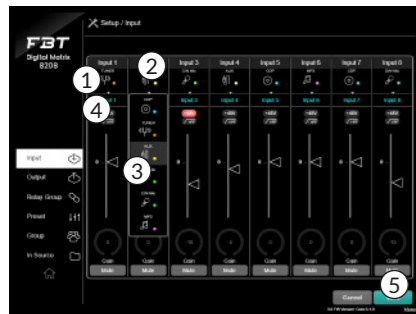


Login with the given ID and PW. Default login value is.
1. ID: Master
2. PW:1
3. Press the Log In button.



When the Home screen appears, click:
1. Setup. Please set an input, output and preset.
2. General. Please set an ID/ PW, Network, and time zone.

Input



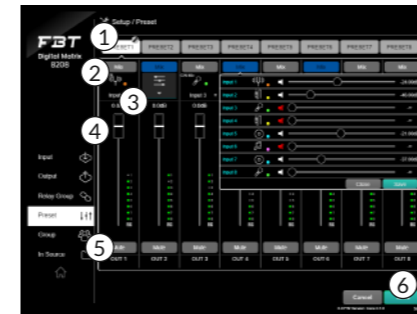
Settings for an input can be made on this page, input type setting, input naming, signal level control, phantom power supply, mute function can be set.
1. Input Naming
2. Selecting the category of input
3. Setting the gain value for the input
4. When CN/Mic (condenser mic) is set in the input category setting, 48V phantom power is automatically applied
5. Press the save button

Output



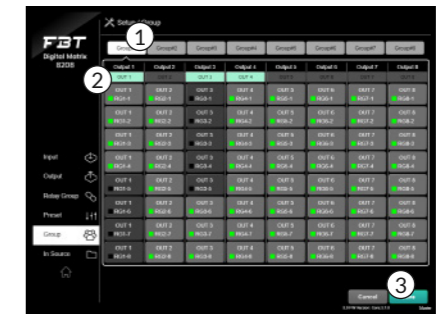
Settings for an output can be made on this page. DM-C8208 has 8 outputs.
1. Output naming
2. Press the save button

Preset



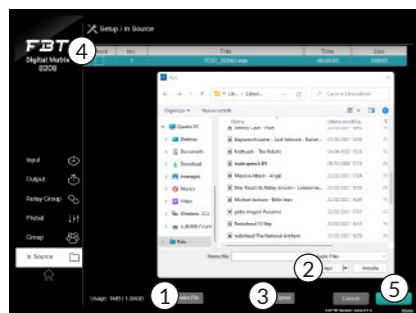
Preset can be used to create a broadcast pattern, it can be controlled from the operation screen.
1. Preset naming (click pencil icon)
2. Select mix or Matrix mode by output
3. Select Input by Output Channel
4. Adjust volume by Output Channel
5. Select Mute by Output Channel
6. Press the Save button

Group



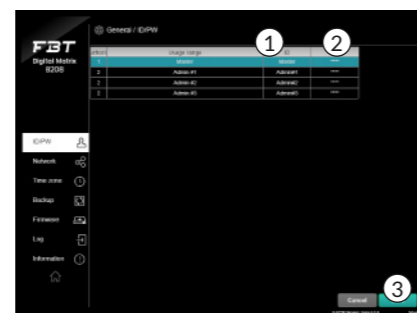
You can set the group for the Output Channel. A total of 8 groups can be created, and the Set Group can be controlled by DM-S8208
1. Enter the Group Name (click the pencil icon)
2. Select the Output Channel (multiple selection is available)
3. Press the Save button

In Source



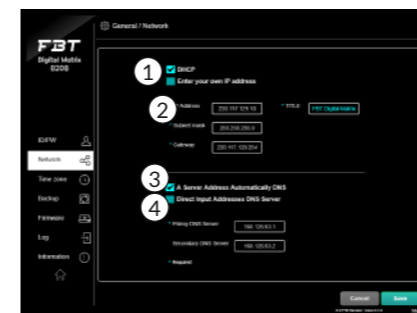
You can save and edit the audio file for scheduled broadcasting.
1. Click the "Select File" button
2. Find the audio file and click the "Open" button in the navigation window
3. Click the "Upload" button
4. When deleting, check the audio file
5. And then click the "Delete" button

ID/PW



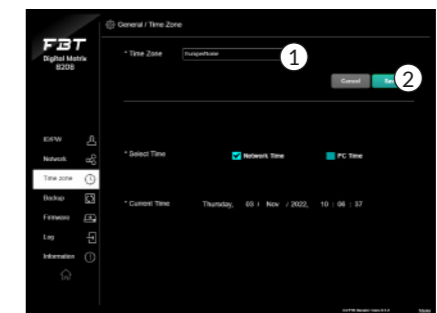
This page is for setting user grade. You can set up 1 Master and 3 Admins. Master grade can be configured and operated for all functions, and Admin can only operate operations.
1. Create an ID Name
2. Create a Password
3. Press the Save button

Network



This page is for network setting.
1. Select DHCP or Direct IP
2. In case of Direct IP, please manually enter the IP address, Subnet mask, Gateway
3. Select either obtain DNS server address
4. In case of the own DNS server address, please manually enter the primary DNS server and the secondary. After saving, DM-C8208 is restarted

Time Zone



Setting for the current time of each country can be made of this page.
1. Select the city/country where the user is located
2. Press the Save button