



ARCHON 105

Passive Sound Reinforcement

APPLICATIONS

- Bars
- Pubs
- Restaurants
- Retail shops
- Clubs
- Entertainment venues
- Fitness centres
- Conference rooms
- Theatres
- Houses of worship
- Exhibition centres

KEY FEATURES

- 2-way passive sound reinforcement system
- 0.47" baltic birch plywood cabinet
- 1 x 5" custom made LF woofer with rubber surround
- 1 x 1" HF dome tweeter
- 100W continuous pink noise
- 200W continuous program
- 400W peak
- Optional line transformer (100V / 50W)
- Multiple M5 threaded rigging points
- Crossover networks equipped with 4 x Euroblock speaker terminals
- Choice of different RAL paint colours
- Choice of different paint finish
- Completely manufactured in Italy



Designed, Engineered
and Manufactured in ITALY

PRODUCT DESCRIPTION

The loudspeaker shall consist of a 5" low frequency transducer 1" HF dome tweeter; the low frequency driver's voice coil shall be 1.25" in diameter. Performance specifications of a typical unit shall be as follows: usable frequency response shall extend from 70Hz to 22kHz; nominal impedance shall be 8 ohms; the frequency dividing network shall have a crossover frequency of 3.0 kHz; measured sensitivity shall be at least 89dB (at 1m [3.3ft]). The input shall be switchable for use either at nominal 8 ohms or on a 100V distributed speaker line via transformer (optional). The cabinet shall be constructed of 0.47" Baltic birch plywood covered in a scratch & scuff resistant black or white finish. ARCHON speakers shall be installed in suspension by wall bracket, on tripod stand, with adjustable wall support and simple stack installation.

ELECTRONIC SPECIFICATIONS

System Type	2 Way
Recommended Amplifier	200W RMS
System Long Term Power	100W
System Short Term Power (IEC 268-5)	400W
Transformer (optional)	100V / 50W
Nominal Impedance	8 Ohm
Frequency Response	70Hz - 22kHz (@-6dB)
Sensitivity	89dB (@1W, 1m)
Max SPL (cont/peak) (bi-amp)*	112dB / 115dB
Dispersion	110°
Crossover Frequency	3.0kHz
Recommended HP Filter	60Hz - 24dB oct.

PHYSICAL SPECIFICATIONS

Low Frequency Woofer	5" / 1.25" coil
High Frequency Driver	1" / 1" coil
Input Connectors	Euroblock (4 pin)
Net Dimensions (WxHxD) inch	7.08 x 11.81 x 7.08
Shipping Dimensions (WxHxD) inch	10.23 x 14.96 x 10.23
Net Weight	8,8 lbs
Shipping Weight	13,2 lbs
Enclosure Material	0.47" baltic plywood
Grille	Steel with powder coat black or white paint finish

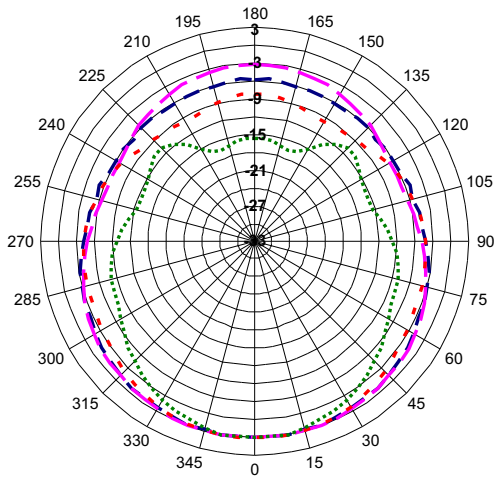
* CONT. SPL: free space, based on recommended amp rating and LF transducer average sensitivity data, 125mS time average
PEAK SPL: free space, based on short term applicable power rating and system peak sensitivity, 10mS time average



DIAGRAMS

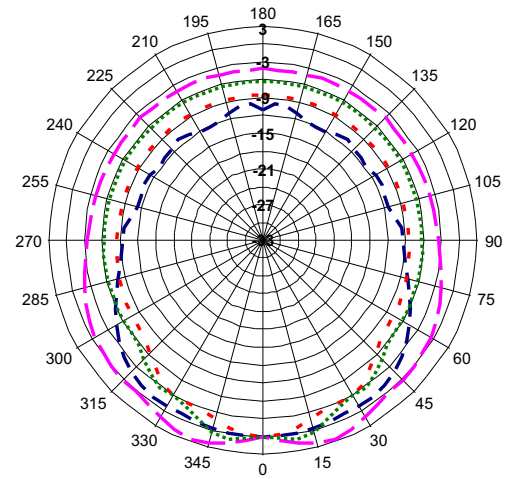
Horizontal polar diagrams

- 250
- 500
- 1000
- 2000

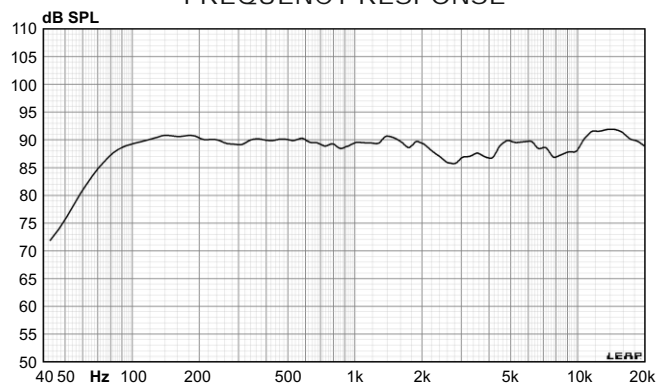


Horizontal polar diagrams

- 4000
- 8000
- 12500
- 16000



FREQUENCY RESPONSE

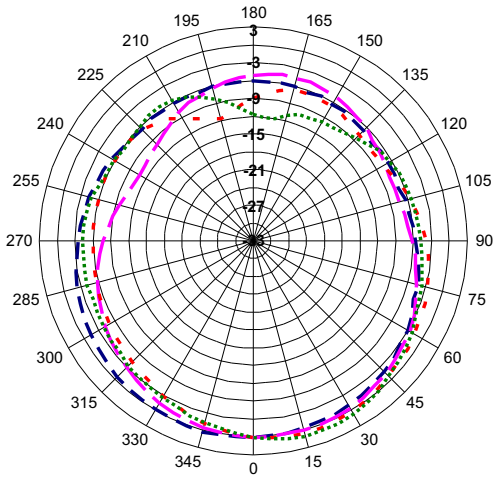




DIAGRAMS

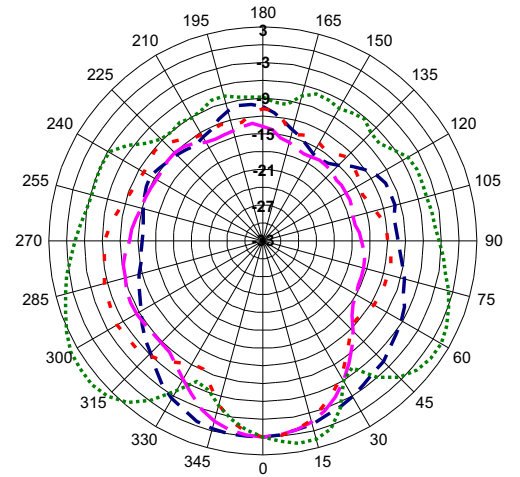
axis normalized vertical polar diagrams

- 250
- 500
- 800
- 1000



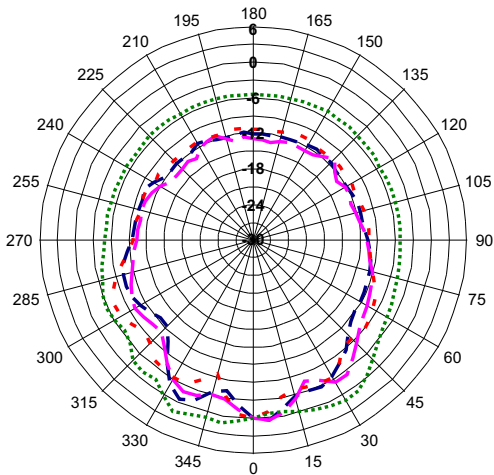
axis normalized vertical polar diagrams

- 1400
- 2000
- 2500
- 3150



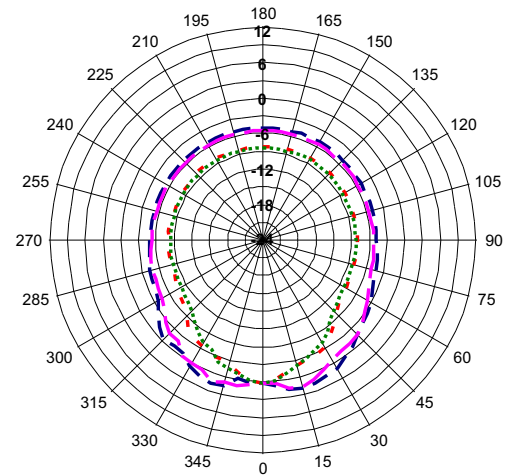
axis normalized vertical polar diagrams

- 4000
- 5000
- 6300
- 8000



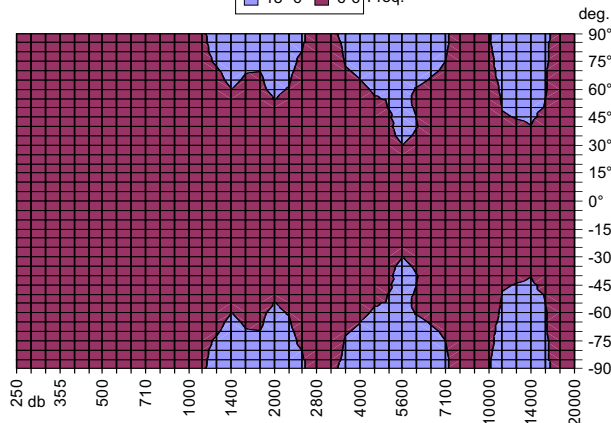
axis normalized vertical polar diagrams

- 9000
- 10000
- 12500
- 14000



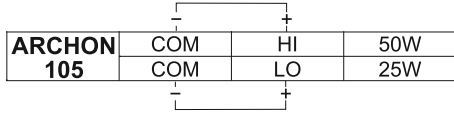
Horizontal coverage

- -18--6
- -6-6 Freq.

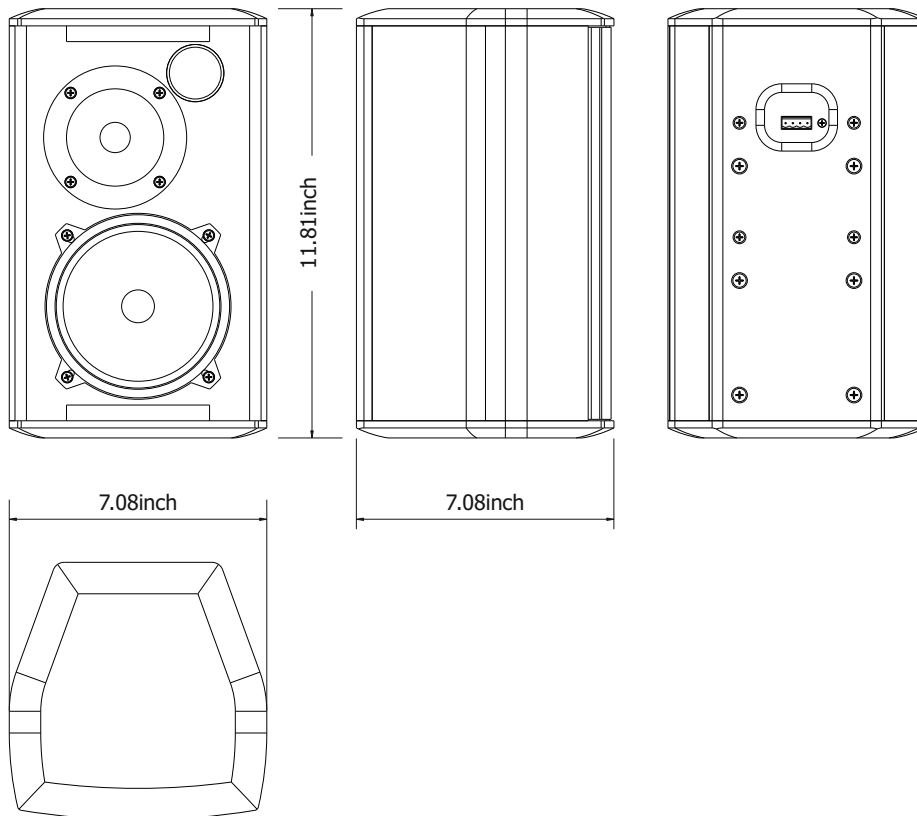




POWER SELECTION



DIMENSIONAL DRAWINGS



ACCESSORIES

